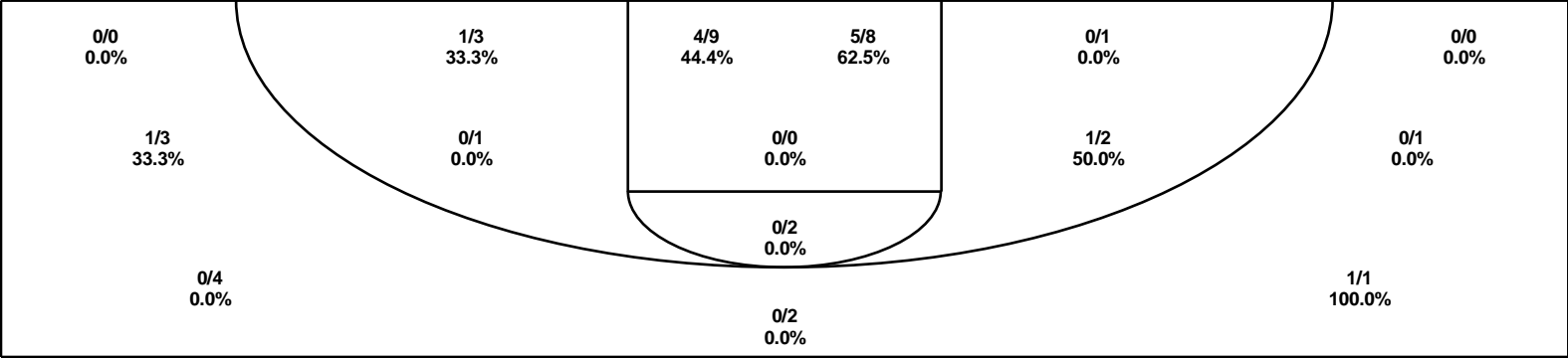
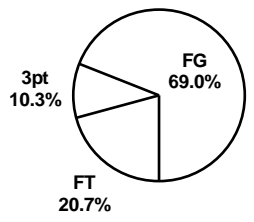


AHSAA State Basketball Championships - TEAM SHOT CHART for the Parker Thundering Herd  
 Parker Thundering Herd vs. Carver-Montgomery Wolverines  
 DATE: 3/5/2004 TIME: 10:30 AM SITE: BJCC Arena

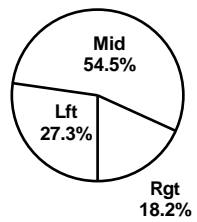


Shot Summary	M/A	%	PTS
3Pt FG	2/11	18.2%	6
2Pt FG	20/42	47.6%	40
Layups - L	4/4	100.0%	8
Layups - R	2/2	100.0%	4
Dunks	1/1	100.0%	2
Putbacks	2/9	22.2%	4
Overall Shooting	22/53	41.5%	46
Free Throws	12/20	60.0%	12
Total Points			58

Scoring Distribution

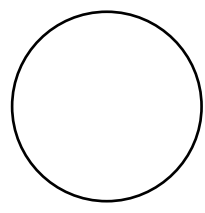


Scoring Locations



By Period	FG	FGA	FG%	3Pt	3PA	3P%	FT	FTA	FT%	PTS	ORB	DRB	TR	PF	AST	TO	BS	ST	P/S
1st Period	6	16	37.5	1	3	33.3	1	2	50.0	14	6	5	11	4	3	4	1	1	0.82
2nd Period	5	11	45.5	0	1	0.00	4	8	50.0	14	1	8	9	5	2	3	1	5	0.93
3rd Period	5	14	35.7	1	3	33.3	2	2	100	13	6	6	12	9	2	7	0	2	0.87
4th Period	6	12	50.0	0	4	0.00	5	8	62.5	17	6	10	16	5	3	6	2	3	1.06
Game	22	53	41.5	2	11	18.2	12	20	60.0	58	19	29	48	23	10	20	4	11	0.92

Scoring Breakdown



Scoring Range

